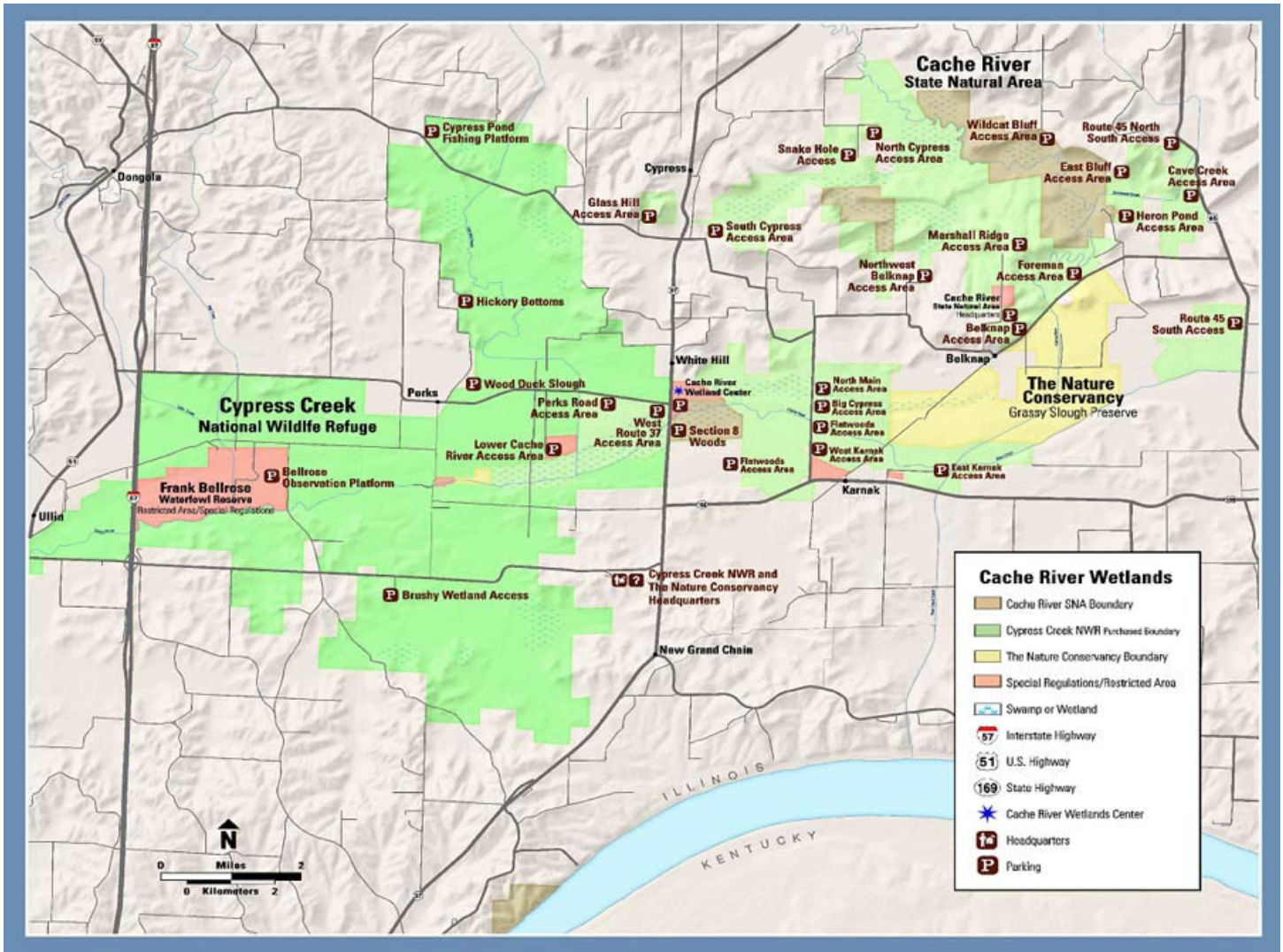


Directions from Cache River Wetlands Center



Limekiln Springs Trail:

- LEFT (S) on IL – 37 S/ State Rt. 37 S 2.7
- RIGHT (W) on Shawnee College Rd. 4.9
- RIGHT (N) on Cache Chapel Rd. to parking 1.1

Bellrose Wildlife Viewing Area:

- LEFT (S) on IL – 37 S/ State Rt. 37 S 2.7
- RIGHT (W) on Shawnee College Rd. 4.9
- RIGHT (N) on Cache Chapel Rd. to parking 1.6

Frank Bellrose Waterfowl Reserve (CLOSED):

- LEFT (S) on IL – 37 S/ State Rt. 37 S 2.7
- RIGHT (W) on Shawnee College Rd. 4.9
- RIGHT (N) on Cache Chapel Rd. 2.1
- LEFT (W) on Butter Ridge Rd. 0.4
- LEFT (S) on shop driveway 0.5

Hickory Bottoms:

- LEFT (S) on IL – 37 S/ State Rt. 37 S 0.1
- RIGHT (W) on Perks Rd. 3.2
- RIGHT (N) on Duckworth Rd. 2.0
- Continue on Mt. Olive Rd. 0.5
- RIGHT (E) on Bailey Rd. 0.7

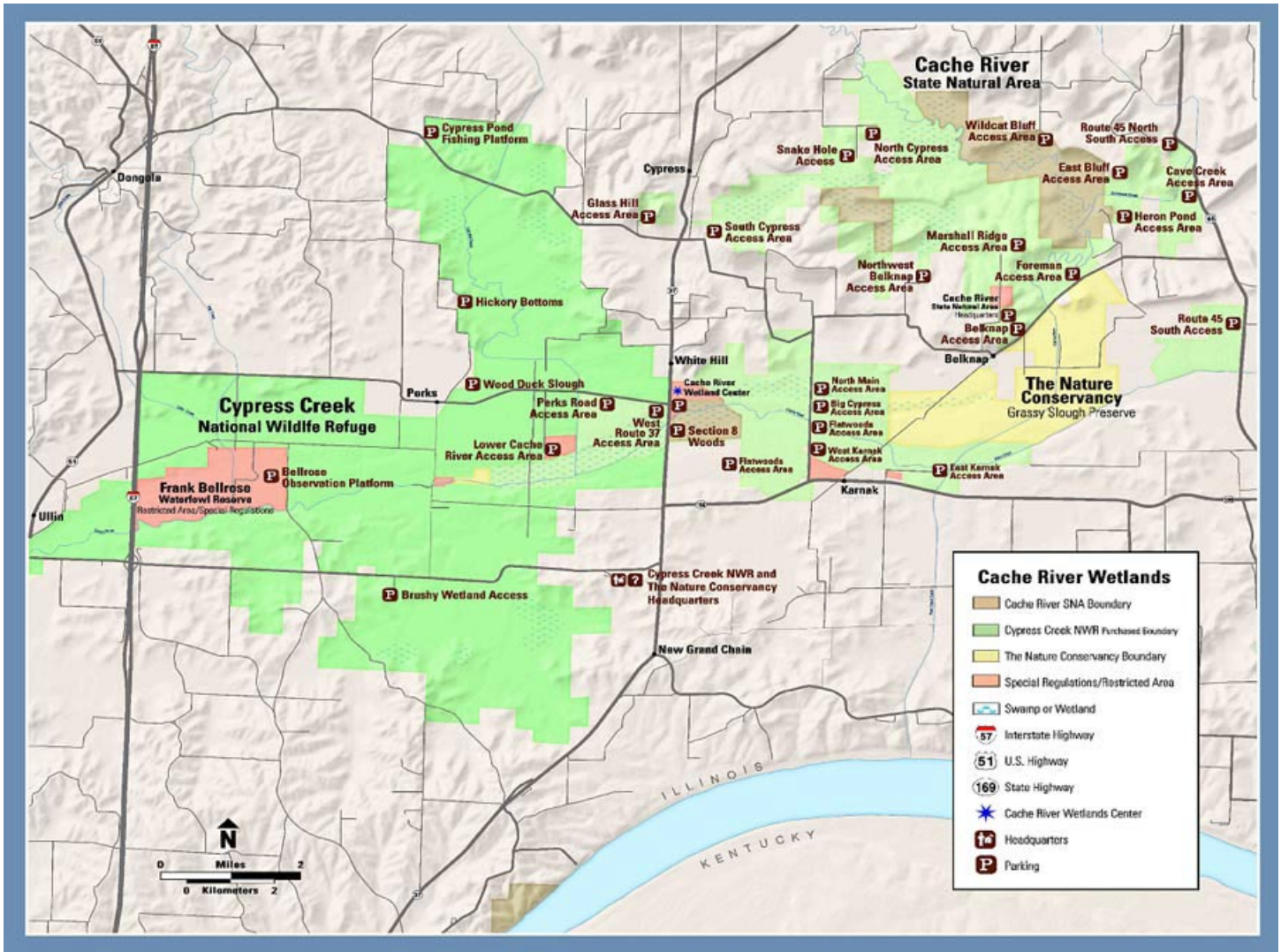
Cypress Pond Access:

- RIGHT (N) on IL – 37 S/ State Rt. 37 S 2.5
- LEFT (W) on Dongola Rd. to parking 4.1

Cypress Creek NWR

- LEFT (S) on IL – 37 S/ State Rt. 37 S 2.7
- RIGHT (W) on Shawnee College Rd. 0.8
- LEFT (S) at main entrance to college 0.1
- RIGHT (W) at first turn to parking

Directions from Cache River Wetlands Center



Big Cypress Tree Access:

- LEFT (S) on IL – 37 S/ State Rt. 37 S 1.7
- LEFT (E) on IL – 169 2.2
- LEFT (N) on Urbana Rd. 1.3

Grassy Slough Preserve:

- LEFT (S) on IL – 37 S/ State Rt. 37 S 1.7
- LEFT (E) on IL – 169 2.6
- LEFT (N) on E 1st St/ Karnak-Belknap Rd. 1.8

Cache River Headquarters/Marshal Ridge:

- LEFT (S) on IL – 37 S/State Rt. 37 S 1.7
- LEFT (E) on IL – 169 2.6
- LEFT (N) on E. 1st St/Karnak-Belknap Rd. 2.9
- LEFT (W) on E. Main St. 0.2
- RIGHT (N) on Sunflower Ln. to: HQ 1.1
- Continue to: Marshal Ridge 0.7

Heron Pond:

- LEFT (S) on IL – 37 S/ State Rt. 37 S 1.7
- LEFT (E) on IL – 169 2.6
- LEFT (N) on E. 1st St/ Karnak-Belknap Rd. 5.4
- LEFT (W) on Heron Pond Rd. to parking 1.

Lower Cache River Access:

- LEFT (S) on IL – 37 S/ State Rt. 37 S 0.1
- RIGHT (W) on Perks Rd. 1.8
- LEFT on River Access Rd. to parking area 1.0

Wildcat Bluff Trailhead/Lookout Point Trail:

- LEFT (S) on IL – 37 S/ State Rt. 37 S 1.7
- LEFT (E) on IL – 169 2.6
- LEFT (N) on E. 1st St/ Karnak-Belknap Rd. 6.7
- LEFT (N) on Hwy 45 2.1
- LEFT (W) on Ballowe Church Rd. 1.8
- LEFT (S) on Hawkins Rd. 1.6
- LEFT (E) on Wildcat Bluff Rd. 0.7